

Pedal Etude 1

Andante (♩ = c. 106)

Paul F. Page
ASCAP

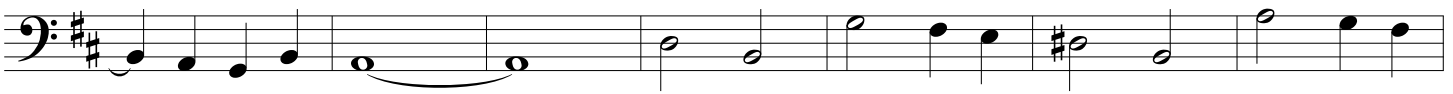
Ped.
solo
16' + 8'



7

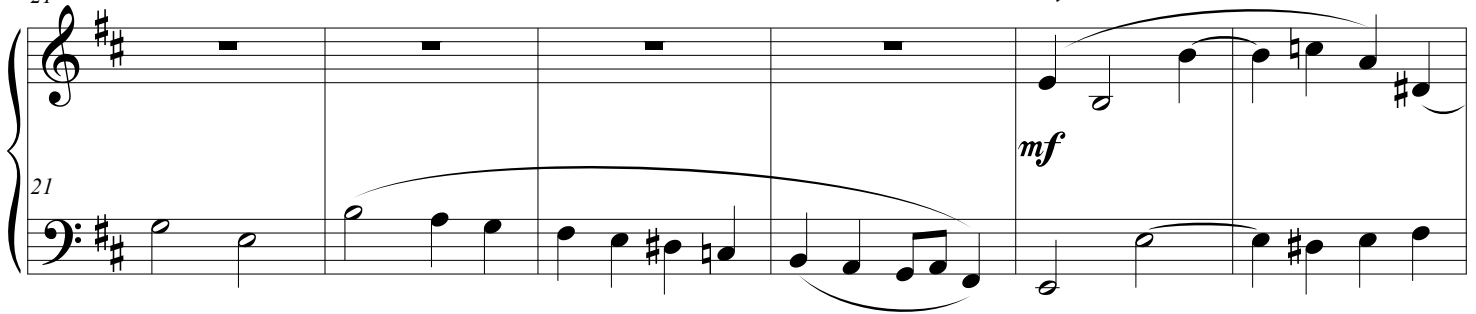


14

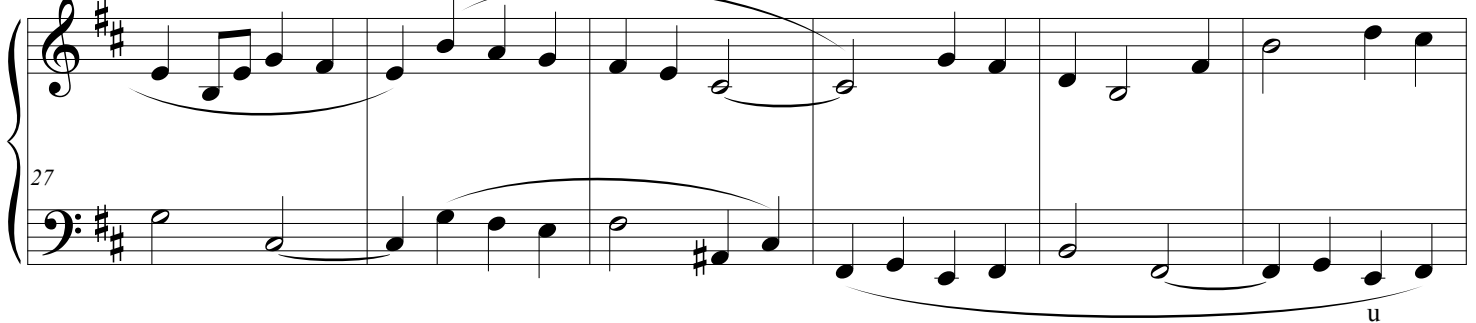


21

+ 1 keyboard Ged 8', Vla. 8'



27



Pedal Etude 1

33

33

This system of music covers measures 33 to 39. The treble clef staff begins with a melodic line starting on G4, moving through A4, B4, and C5, with various rhythmic values including eighth and sixteenth notes. A long slur spans from the first measure to the end of the system. The bass clef staff provides a harmonic accompaniment with a steady eighth-note pattern, featuring a prominent pedal point on G3. A slur in the bass staff covers measures 35 through 39.

40

40

This system of music covers measures 40 to 45. The treble clef staff continues the melodic line from the previous system, ending with a final chord. A slur spans from measure 40 to the end of the system. The bass clef staff continues the eighth-note accompaniment, with a slur from measure 40 to the end. A fermata is placed over the final note of the bass staff in measure 45. The system concludes with a double bar line.

19 November 2015